

# Reading your Meter

There are three main types of electricity meters in use

- Mechanical revolving disc meters
- Electronic meters

## What type of meter do I have?

To identify the type of meter you have, look at the descriptions below. To find out how to read your meter, select the relevant option.

---

### Mechanical Meter

This meter is the most common type of meter in domestic dwellings. It has a revolving disc and one row of numbers. There are two different types – 24 Hr Revolving Disc Meter and Time of Day Meter.

Business customers may have a Wattless Meter installed. The Wattless meter is distinguished from Standard Meters or Day & Night Meters by the letters kVA<sub>rh</sub> located near its register and is read in the same way.

### Reading Mechanical Revolving Disc Meters

## Reading a 24 Hour Revolving Disc Meter



[Watch video on how to read a 24Hr Revolving Disc Meter](#)

This meter records your electricity usage on a single register and is installed if you are on an Urban 24 Hour or Rural 24 Hour Tariff.

### How to take a reading

- Record the number on the display from left to right
- Ignore any figures in red or any figures surrounded by a red box

**Note:** If you have night storage heaters, you may have two of these meters installed or a single Day and Night meter.

## Reading a Time of Day (Day & Night) Revolving Disc Meter



[Watch video to find out how to read a Day & Night Revolving Disc Meter](#)

This meter records your day time and night time electricity usage. If you are on a Time of Day tariff, you are more likely to have this type of meter. A separate external time switch is installed to control the tariff (clock always set to GMT).

The meter may have numbers 1 and 2 or the Roman Numerals I and II against each register. On all ESB Networks' meters, '1' is your night consumption and '2' is your day consumption.

### How to take a reading

- Record the number on the display from left to right on each of the registers
- Ignore any figures in red or any figures surrounded by a red box

# Electronic Meters

## Reading an ABB Vision/Elster A1700 Meter



This meter has an electronic display which changes every 9 seconds. If your RM number is 548, 549, 645, 647 or 650 you may have this meter. The RM number is at the bottom left hand side of the meter.

### How to take a reading

- Flat Rate & Time of Day Customers use screens 9, 10 & 11
- Maximum Demand Customers use screens 14, 16, 18, 19 & 20 If date of last reset in screen 12 is not the current month, readings cannot be taken as the meter has not been reset.
- Record numbers left to right ignoring figures right of decimal.

## Reading an ABB/GEC PPM Meter

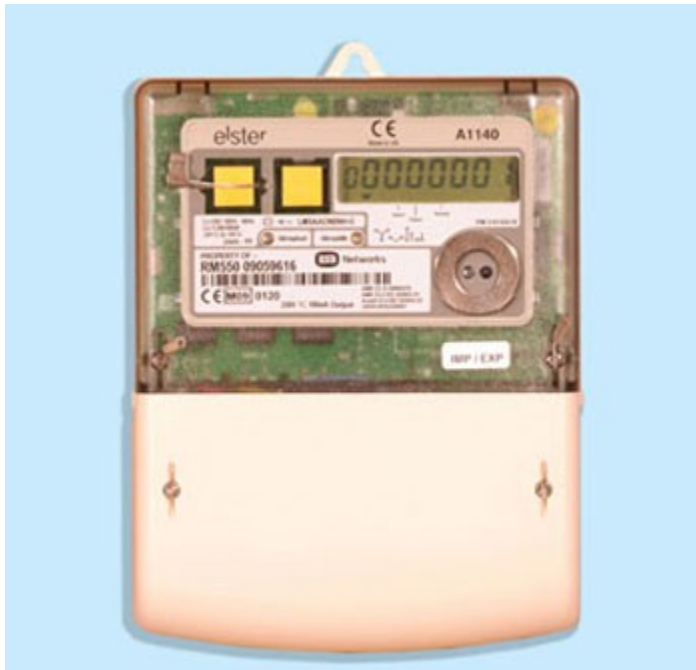


If your RM number is 545 or 667 you may have this meter type. The RM number is at the bottom left hand side of the meter. The meter has an automatic scrolling electronic display. The display changes every 6 secs illustrating 13 different information panels. Flat Rate & Time of Day - use Screens 11, 12 & 13.

### **How to take a reading**

- Record numbers left to right. Ignore figures right of decimal.
- Maximum Demand - do not submit meter readings as the information required for billing is inaccessible from this meter. If you have any queries contact your Electricity Supplier.

## Reading an Elster A1140/A1120 Meter



If your RM number is 648, 651, 627, 553 or 551 this is the meter type you may have. The RM number is located at the bottom left hand side of the meter. This meter may have an auto scroll feature that changes screens automatically. Press the button only if the meter has no auto scroll.

### **How to take a reading**

- 24 Hr reading (Total Day & Night) taken from screen CUM kWh
- Day Reading is taken from screen TOU ACTIVE 2 kWh. The decimal point is not included in reading.

## Reading an Iskra MT173 Meter



If your RM number is 649 or 552 this is the meter type you may have. The RM number is located at the bottom left hand side of the meter. This meter may have an auto scroll feature that changes screens automatically.

**How to take a reading** - record the number left to right. If the meter has a decimal point, this is not included in the reading.

**1.8.2** = Day Reading **1.8.1** = Night Reading

**5.8.0** = Wattless **1.8.0** = 24 Hour Reading (Total Day & Night)

**Safety Tip:** Please be careful when reading your meter, especially if it is up high or in an inaccessible place.